



# VeinSpy™

## The Hand-Held Vein Finding Device



## Simplifying Vein Access

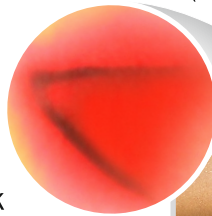
## The Hand-Held Vein Finding Device

### Working Principle of the VeinSpy™

The **VeinSpy™** works on Transverse Illumination Technology. In **VeinSpy™** light beams from a circular LED array penetrates the skin, which are directed below & focused centrally. This acts as a fundamental light source to achieve identical illumination of subcutaneous tissues. The veins which are present in the illuminated area absorbs the light & becomes prominent as dark lines. The **VeinSpy™** device consist of two sets of colored LEDs, one set emits Orange light & another set emits Red light. The Orange light is optimal for superficial veins where as the Red light is for viewing deeper veins.

### Application of the VeinSpy™

- Easy visualization of veins in Adult Pediatric & Geriatrics patients with difficult venous access.
- Clear visualization of veins for obese & dark skin patient.
- Clear visualization of veins before starting of IV therapy.



### Advantages of the VeinSpy™

- Reduce multiple needle prick & improves site selection for needle insertion.
- No treatment delay due to difficult venous access.
- Reduce patient pain due to needle insertion in muscle/tingling sensation due to hitting of needle in nerve.
- Increase patient comfort & satisfaction. Avoids hematoma.

### Ordering Information :

Sr. No.	Product Name	Cat No.
01	VeinSpy™	825VS000000
02	Disposable Plastic Sleeves	825DS5000050
03	Injecta™ (General purpose antiseptic solution)	IJT 0200

### How to Use VeinSpy™

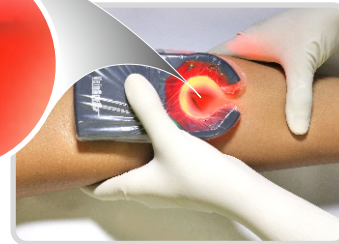
Wipe the area of the Patient's Skin with Alcohol swab or preferably with Injecta™.  
(General purpose antiseptic solution)



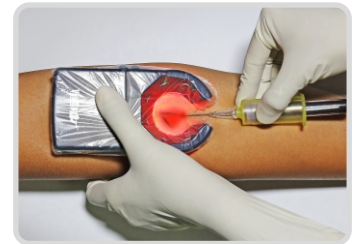
Insert VeinSpy™ into the disposable sleeve & switch ON.  
(Use new sleeve for every use)



Move the VeinSpy™ across & forth to get a clear view of the specific vein.



After visualization of vein move the device so that needle can be inserted easily.



Gently press the VeinSpy™ on the vein, through the open end of VeinSpy™ insert needle into the vein.

### Technical Specification

Number of LED's	22 Orange, 8 Red
Power ON	Indication by Green LED
Low power	Indication by Red LED
Functional opening	17mm
Viewing diameter	33mm
Rechargeable Battery	Lithium Ion, 3.7V, 1150mAh
Battery Charger	110-240 volts AC input, 5V DC output 500mA
Battery Backup	1½ hrs. Continuous usage
Dimensions	L 125 mm; B 65 mm; H 22.7 mm
Weight	90 gms

For Further Details Contact : Tulip IBG Division



Microexpress®

Coral Clinical Systems



TULIP DIAGNOSTICS (P) LTD.

For further information contact :



ISO 13485:2003

Gitanjali, Tulip Block, Dr. Antonio do Rego Bagh, Alto Santacruz, Bambolim Complex Post Office, Goa - 403 202, INDIA.  
Tel.: +91 832 2458546-50 Fax : +91 832 2458544 E-mail : sales@tulipgroup.com Website : www.tulipgroup.com