

BC-5130
Auto Hematology Analyzer

- Features:
60 samples per hour
5-part differentiation, 25 reportable parameters+10 research parameters, 3 scattergrams and 3 histograms
Laser scatter + Chemical dye + Flow cytometry technology
Tri-angle laser scatter, have better performance on high Eosinophil sample
Independent channel and optical method for Basophil measurement
Powerful capability to flag abnormal cells
Support whole blood mode for capillary sample
10.4 inch large TFT touch screen
Large storage capacity: up to 150,000 samples
Support uni- or bi-directional LIS
- Sample Volume
Prediluted 20 µL
Whole blood 15 µL
Capillary WB blood 15 µL
- Throughput
60 samples per hour
- Display
10.4 inch TFT Touch Screen
- Multi-language
Chinese, English
- Data Storage Capacity
Up to 150,000 results including numeric and graphical information

Technical Specifications

- Principles
Impedance method for RBC and PLT counting
Cyanide free reagent for hemoglobin test
Flow Cytometry (FCM) + Laser scatter + Chemical dye method for WBC differential analysis and WBC counting
- Parameters
25 reportable parameters: WBC, Lym%, Mon%, Neu%, Bas%, Eos%, Lym#, Mon#, Neu#, Eos#, Bas#, RBC, HGB, HCT, MCV, MCH, MCHC, RDW-CV, RDW-SD, PLT, MPV, PDW, PCT, P-LCR, P-LCC.
10 Research parameters include LIC%, LIC#, ALY%, ALY#,PLT Clumps#, PLT Clumps%, Lip#, Lip%,NRBC#, NRBC%
3 histograms for WBC, RBC and PLT
3 scattergrams: 4-differential scattergram and 2 scattergrams for Eosinophil
- Reagent
Diluent, DIFF lyse, LH lyse, probe cleanser

Performance

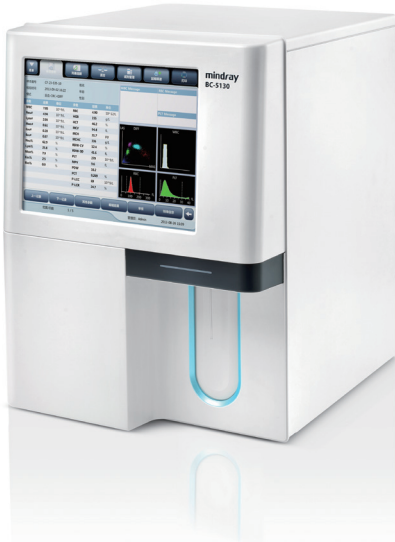
Parameter	Linearity Range	Precision	Carryover
WBC	0-500×10 ⁹ /L	≤2% (4-15×10 ⁹ /L)	≤0.5%
RBC	0-8×10 ¹² /L	≤1.5% (3.5-6.0×10 ¹² /L)	≤0.5%
HGB	0-250g/L	≤1.5% (110-180g/L)	≤0.6%
PLT	0-5000×10 ⁹ /L	≤4.0% (100-500×10 ⁹ /L)	≤1.0%

- Communication
LAN Port supports HL7 protocol
- Interface
USB, LAN, COM
Support Uni- or bi-directional LIS
- Printout
External Laser printer / Inkjet printer, various printout formats and User-defined formats
- Operating Environment
Temperature: 10°C~30°C
Humidity: 20%~85%
Air pressure: 70 kPa~106 kPa
- Power requirement
100V-240V
50Hz/60Hz
- Dimension and Weight
Depth*width*height: 400mm*320mm*410mm
Weight :24kg



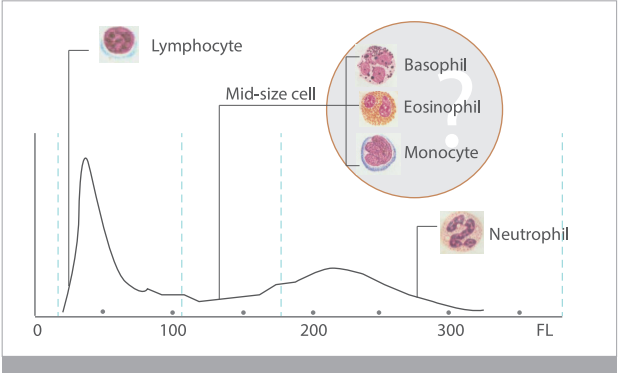
BC-5130
Auto Hematology Analyzer

A “CUTE” 5-part



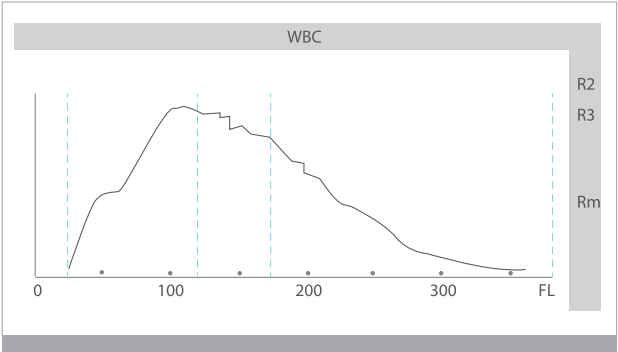
Why do we need 5-part hematology analyzers?

WBC differential: 3-part



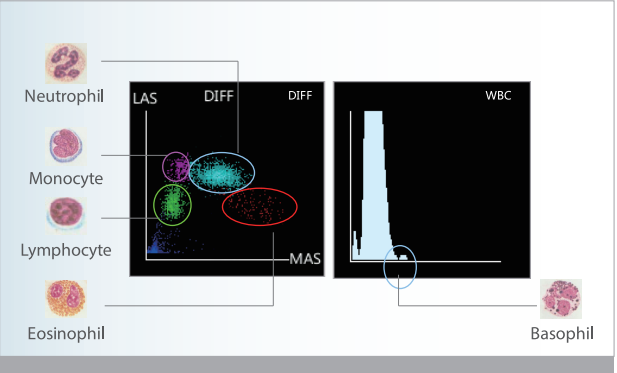
3-part hematology analyzers can not differentiate Basophil, Eosinophil and Monocyte. Additionally, Lymphocyte and Neutrophil results are easily affected by abnormal cells.

Flag information: 3-part



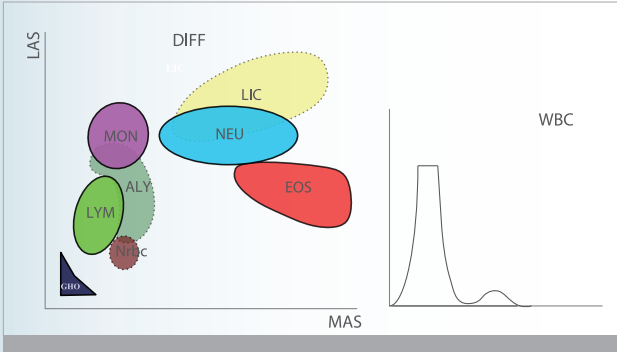
WBC histogram only indicates regional abnormal graph, it can't bring specific flags for different clinical cases.

WBC differential: 5-part



5-part hematology analyzers can provide Lymphocyte, Monocyte, Neutrophil, Eosinophil and Basophil results for every sample. Additionally, the 5-part results are less affected by abnormal cells.

Flag information: 5-part



5-part hematology analyzers provide more detailed and specific flag information. Users are able to clearly understand the clinical significance of flags and make a decision.

BC-5130 Auto Hematology Analyzer

Based on Mindray's continuous innovation in hematology field, BC-5130 is especially tailored to assist diagnostic labs who need full CBC + 5-part results, with relatively low daily sample volume, restricted lab space and tight budget.

As the lightest and most compact 5-part hematology analyzer so far from Mindray, BC-5130 is a highly user-friendly and innovative analyzer that offers cost efficient CBC and 5-part white cell differential results. It is targeted to fulfill and exceed the demands of our global customers by providing more accurate, more efficient and more innovative solutions for labs.

WBC 5-part differentiation, 25 reportable parameters and 10 research parameters, 3 histograms and 3 scattergrams

Whole blood mode, Capillary whole blood mode and Prediluted mode

Tri-angle Laser scatter + Chemical dye + Flow cytometry technology

Dedicated optical counting channel for Basophil measurement

Powerful capability of flagging abnormal cells

10.4 inch large TFT touch screen with user-friendly software

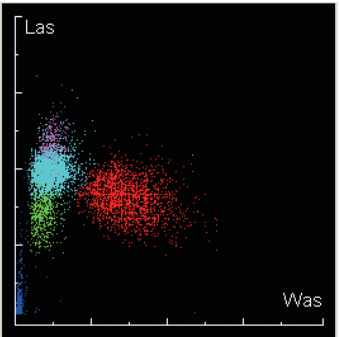
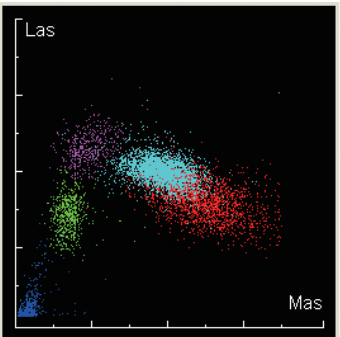
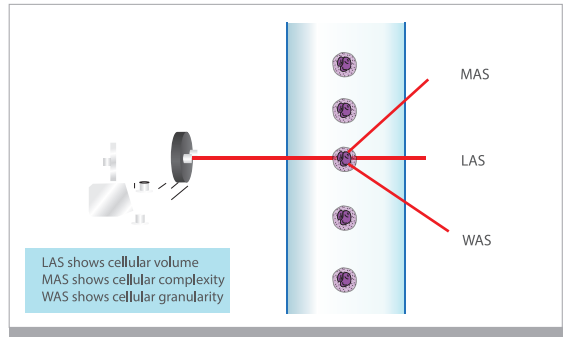
Large storage capacity: up to 150,000 samples

Throughput: 60 samples per hour

Sample volume is only 15µL which is ideal for pediatrics



Tri-angle laser scatter + focused flow + chemical dye, creating the possibility for a better 5-part WBC differentiation even on samples with high Eosinophil.



Dr Marisela Ramos, lab manager

Users are able to access our tailored innovation and intelligent diagnosis support to safeguard their diagnoses decisions with maximum confidence.

She said: "we upgraded to a 5-part hematology analyzer 3 months ago, and it's been working very well. Our lab has lots of abnormal samples, such as Eosinophilia and Monocytosis samples. We could only get the information that the mid-size cells percentage was higher than normal level, but couldn't distinguish which kind of cells increased exactly. Now, the 5-part hematology analyzer provides flags directly, which reduces smears need to be reviewed, and significantly improves our work efficiency."

BC-5130, the 5-part hematology analyzer offers a great solution for clinical labs, especially for those who have limited space. Its compact foot-print is a result of innovative technology improvements, including miniaturized semi-conductor laser source, highly integrated electronic boards and optimized liquid handling system.



Compact

Two kinds of lyse reagents are located inside of BC-5130, which helps the small labs to save space.



Utility

The 10.4 inch TFT touch screen with a wide viewing angle, brings convenience to clinicians. Users can complete all instrument operations on the screen, practically eliminating the need for an external PC.



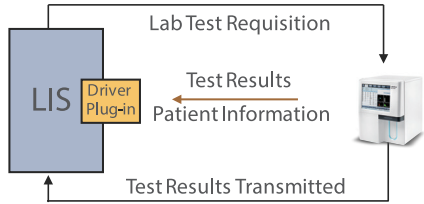
BC-5130 inherits it's convenient and proven powerful software design from BC-6800 and BC-3600 platforms, the friendly interface is ideal for small sized labs.



Running capillary blood through the sample probe directly is more convenient for the users in children's hospitals, etc. For Prediluted mode, BC-5130 has higher dilution ratio than other 5-part hematology analyzers, thus it brings a better mixing effect.



4 USB ports are located on the instrument's left side. They permit BC-5130 users to transmit data conveniently and connect with printers, keyboard, mouse, barcode scanner, etc.

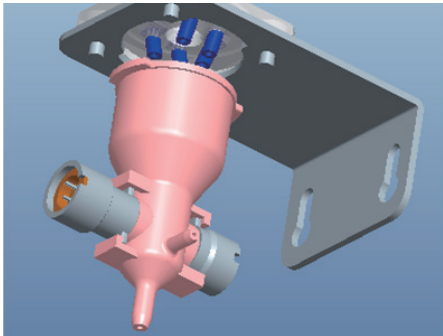


BC-5130 supports bi-directional LIS with test results and patient information. HL7 protocol is supported as well.



Technology

Compared with traditional helium neon laser or argon laser, semi-conductor laser has smaller size, lower cost and longer life cycle.



Improved DC impedance technology is used to count and size the RBC and PLT. The smaller counting aperture (50 μm in diameter) provides better performance on samples with low PLT.



Efficient

Only three routine reagents are required. These have 2 years shelf life and also less consumed by BC-5130. Original QC and calibrator are also provided to ensure the hematology analyzer's traceability and testing quality.